

THE AMERICAN GENERA OF ASILIDAE (DIPTERA): KEYS FOR IDENTIFICATION WITH AN ATLAS OF FEMALE SPERMATHECAE AND OTHER MORPHOLOGICAL DETAILS. VII. 3. SUBFAMILY STENOPOGONINAE HULL — TRIBES DIOCTRIINI AND ECHTHODOPINI*

LOS GENEROS AMERICANOS DE ASILIDAE (DIPTERA): CLAVES PARA SU IDENTIFICACION CON UN ATLAS DE LAS ESPERMATECAS DE LAS HEMBRAS Y OTROS DETALLES MORFOLOGICOS. VII.3. SUBFAMILIA STENOPOGONINAE HULL — TRIBUS DIOCTRIINI Y ECHTHODOPINI

Jorge N. Artigas** and Nelson Papavero***

ABSTRACT

A key is given for the two nearctic genera of Dioctriini and the five genera of Echthodopini, with illustrations of the spermathecae of some of those genera. Only one species of Dioctriini and one of Echthodopini are known from the neotropical region.

KEYWORDS: Insecta. Taxonomy. America. Key. Asilidae. Stenopogoninae. Dioctriini. Echthodopini.

RESUMEN

Se presenta una clave para los dos géneros neárticos de Dioctriini y los cinco géneros de Echthodopini, con ilustraciones de las espermatecas de algunos de esos géneros. Hay solamente una especie de Dioctriini y una de Echthodopini conocidas en la región neotropical.

PALABRAS CLAVES: Insecta. Taxonomía. América. Clave. Asilidae. Stenopogoninae. Dioctriini. Echthodopini.

* This research was supported by the Fundação de Amparo à Pesquisa do Estado de Sao Paulo (Grants 85/1772-5, 86/3327-1 and 87/3170-8).

** Universidad de Concepción-Facultad de Ciencias Biológicas y de Recursos Naturales - Departamento de Zoología. (Proyecto Dirección de Investigación N° 203812, U. de Concepción) Proyecto Fondo Nacional de Investigación Científica y Tecnológica, Chile: N° 92-0289. [Parte].

*** Museu de Zoologia & Instituto de Estudos Avançados, Universidade de Sao Paulo. Pesquisador do Conselho Nacional de Desenvolvimento Científico e Tecnológico (CNPq, Proc. N° 30. 0994/79).

INTRODUCTION

A key to the tribes of Stenopogoninae has been published in Part VII.1 of this series (Gayana 55(2): 139-144), and a key to the genera of the tribes Acronychini, Bathypogonini and Ceraturgini in Part VII.2 (Gayana 55(3): 247-255. Previous papers in this series were published as follows: Part I) (Key to subfamilies, subfamily Leptogastrinae) in Gayana, Zool. 52(1-2): 95

114, 1988; Part II (Dasypogoninae) in Gayana, Zool. 52(3-4): 199-260, 1988; Part III (Trigonimiminae) in Bol. Soc. Biol. Concepción 60: 35-41, 1989; Part IV (Laphriinae, except Atomosiini) in Bol. Mus. paraense Emilio Goeldi, Zool. 4(2): 211-255, 1988; Part V (Stichopogoninae) in Bol. Soc. Biol. Concepción

61: 39-47, 1990; Part VI (Laphriinae (Atomosiini)) in Gayana, Zool. 55(1): 53-87, 1991.

The methodology employed in the dissection and preservation of the male terminalia, female spermathecae and other morphological parts is the same employed by Artigas (1971).

Tribe DIOCTRIINI Hull, 1962

KEY TO GENERA:

- 1. Antennal basis not raised on tubercle, hidden behind eye margin in profile. Second flagellomere short and narrow, one-fifth as long as first flagellomere, subtruncate or cup-shaped *Nannodictria* Wilcox & Martin, 1942
- Antennal basis not raised on tubercle visible in profile. Second flagellomere long, subequal in width to first flagellomere, one-third to one-half as long as first flagellomere, more or less board-shaped. Spermathecae as in figs. 1-2 *Dioctria* Meigen, 1803

Genus *Nannodictria* Wilcox & Martin, 1942

Dioctria, subg. *Neodictria* Wilcox & Martin, 1941: 7 (preocc. Ricardo, 1912). Type-species, *albicornis* Wilcox & Martin (orig. des.).

Dioctria, subg. *Nannodictria* Wilcox & Martin, 1942: 35 (*nom. nov.* for *Neodictria* Wilcox & Martin). Type-species, *albicornis* Wilcox & Martin (*aut.*).

australis (Adisoemarto & Wood), 1975: 515 (*Dioctria*). Type-locality: Mexico, Chiapas, San Cristóbal.

Tribe ECHTHODOPINI Adisoemarto & Wood, 1975

KEY TO GENERA:

- 1. Upper half of face and frons prominently swollen, bearing the antennae and a brush of abundant long hairs below their base, these hairs extending ventrally along lateral margins of face. Spermathecae as in Figs. 3-4..... *Dicolonus* Loew, 1866.
- Swelling at antennal base less well-marked or nearly absent; upper part of face either bare or with only a single row of hairs along eye margin (except *Metadioctria*, with a group of hairs below antennal base) 2
- 2(1). Upper part of face bare. Abdominal tergite 2 with a groove about one-third to one-fourth apart from base of segment, groove extending laterally, separating a shiny crescent-shaped area on the first third of the segment 3

Upper part of face with a few weak hairs besides eye and occasionally with a few under antennal bases. Abdominal tergite 2 without a groove, or with the groove close to the proximal margin and not separating off a crescent-shaped area 4

3(2). Scutellar margin with moderately long erect hairs, as long as scutellum, disc of scutellum with appressed short hairs. Anepisternum covered with recumbent hairs. Spermathecae as in Figs. 5-6 *Echthodopa* Loew, 1866

Scutellar margin without long hairs, disc of scutellum bare or at most with minute hairs. Anepisternum pilose on upper one-third and along posterior margin. Spermathecae as in Figs. 7-8 *Eudioctria* Wilcox & Martin, 1941

4(2). Abdominal tergites strongly arched dorsally, rounded, in cross sections, making abdomen chrysidid-like. Scutum bare, or with sparse minute hairs. Scutellar margin with very short appressed hairs. Frons and occiput pruinose *Bohartia* Hull, 1958

Abdominal tergites flattened dorsally. Scutum and scutellar margin with long fine hair. Frons and occiput shining black *Metadioctria* Wilcox & Martin, 1941.

Genus BOHARTIA Hull, 1958

Bohartia Hull, 1958: 317. Type-species, *bromleyi* Hull (orig. des.).

senecta Adisoemarto & Wood, 1975: 532. Type-locality: Mexico, Baja California, Colonia Guerrero.

REFERENCES

ADISOEMARTO, S. & D.M. Wood, 1975. The Nearctic species

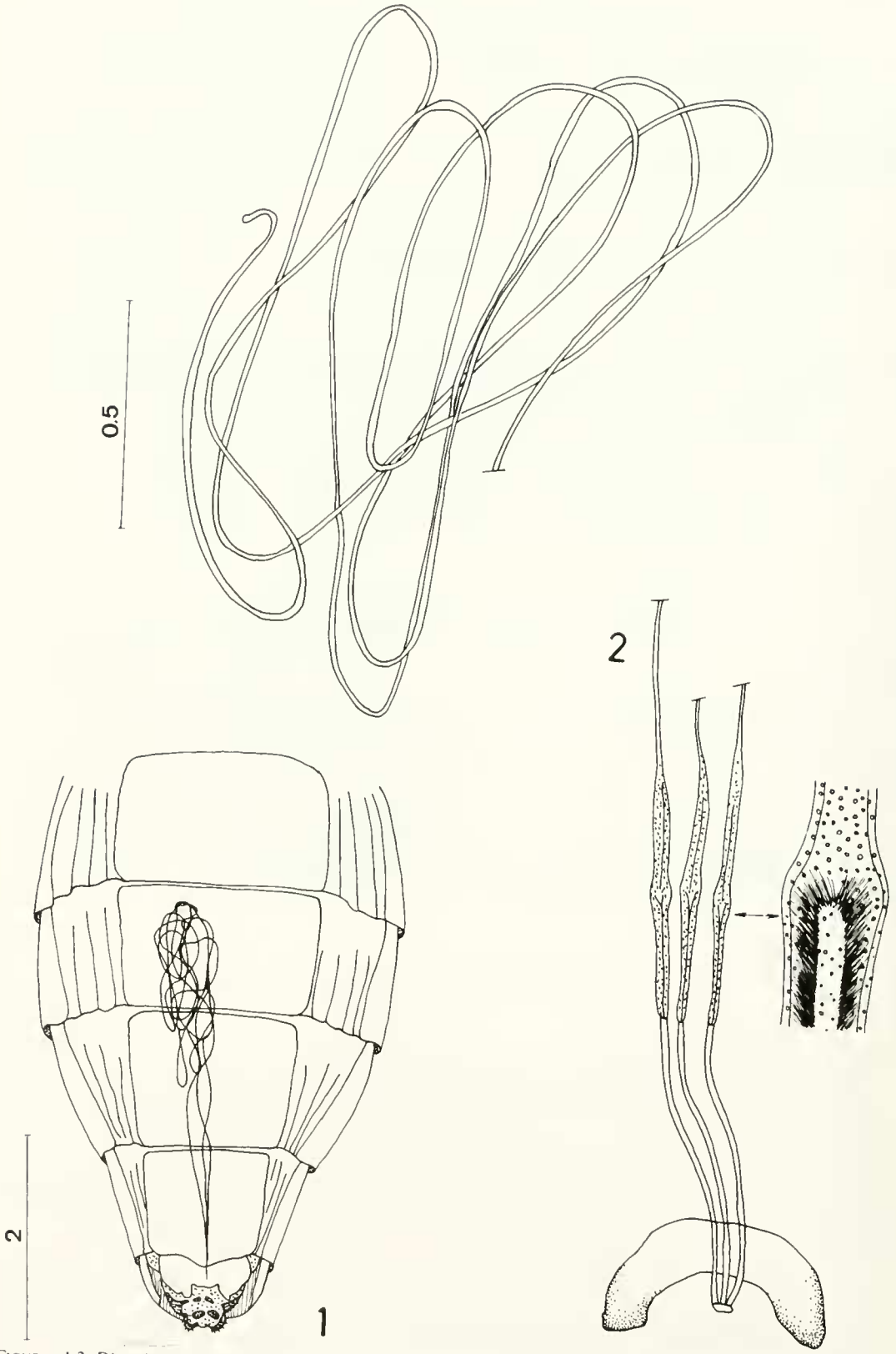
of *Dioctria* and six related genera (Diptera, Asilidae). *Quest. ent.* 11: 505-576, 139 figs.

ARTIGAS, J.N. 1971. Las estructuras quitinizadas de la spermatheca y funda del pene de los asilidos y su valor sistemático a través del estudio por taxonomía numérica. *Gayana (Zool.)* 18: 1-106, 138 figs.

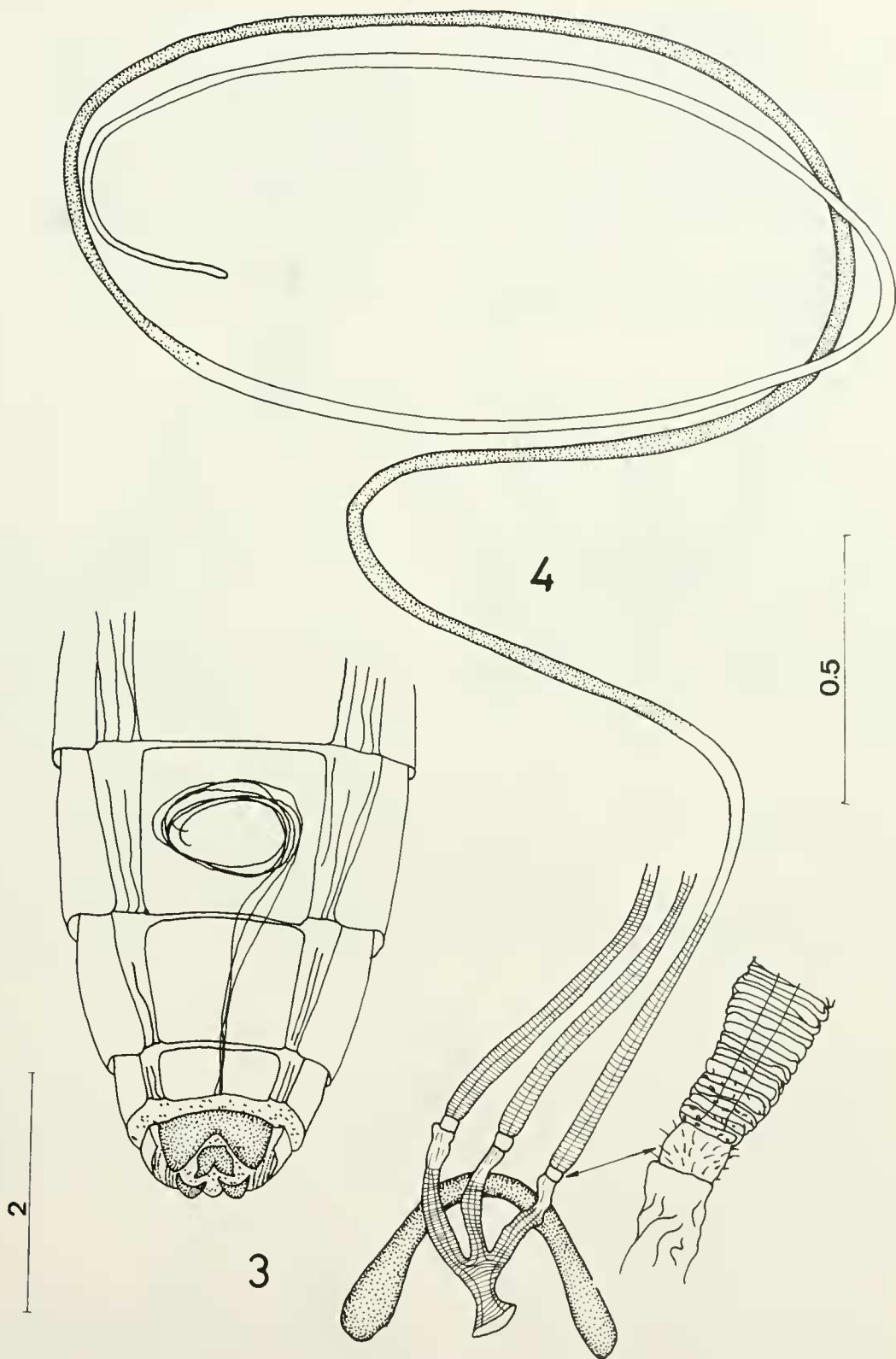
HULL, F.M., 1958. New genera of robber flies (Diptera, Asilidae). *Revta. bras. Biol.* 18: 317-324.

WILCOX, J. & C. H. MARTIN. 1941. The genus *Dioctria* Meigen in North America (Diptera-Asilidae). *Entomologica americana* 21: 1-22.

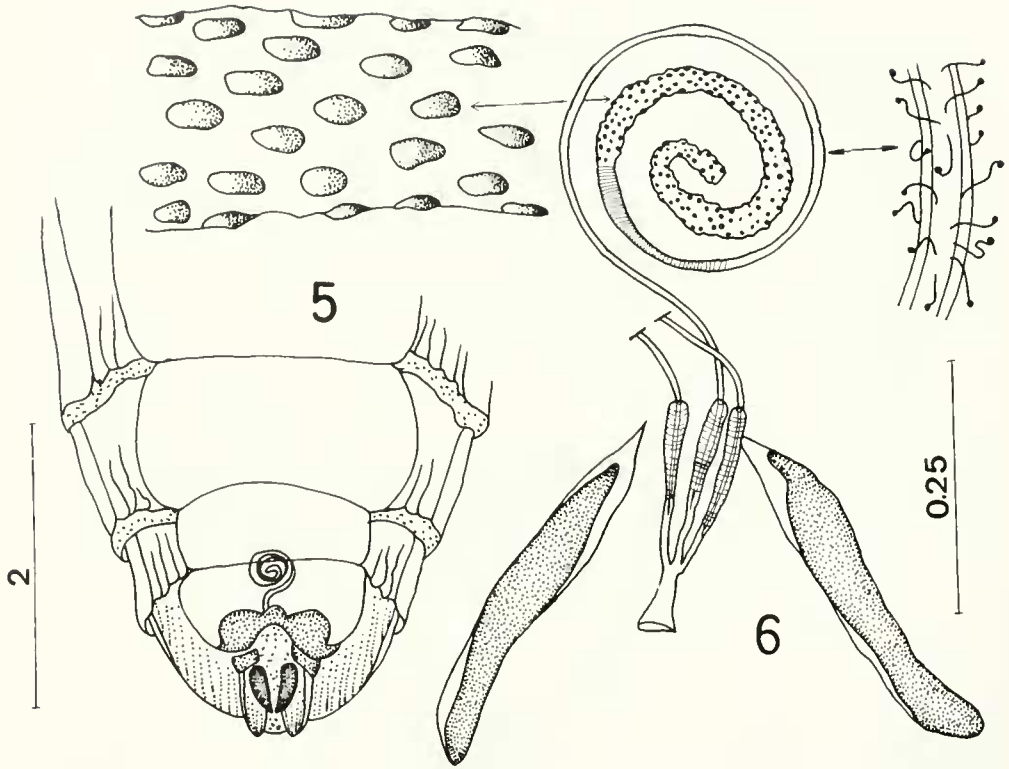
WILCOX, J. & C. H. MARTIN, 1942. *Nannodioctria* n. n. for *Neodioctria* Wilcox & Martin (nec Ricardo). *Bull. Brooklyn ent. Soc.* 37: 35.



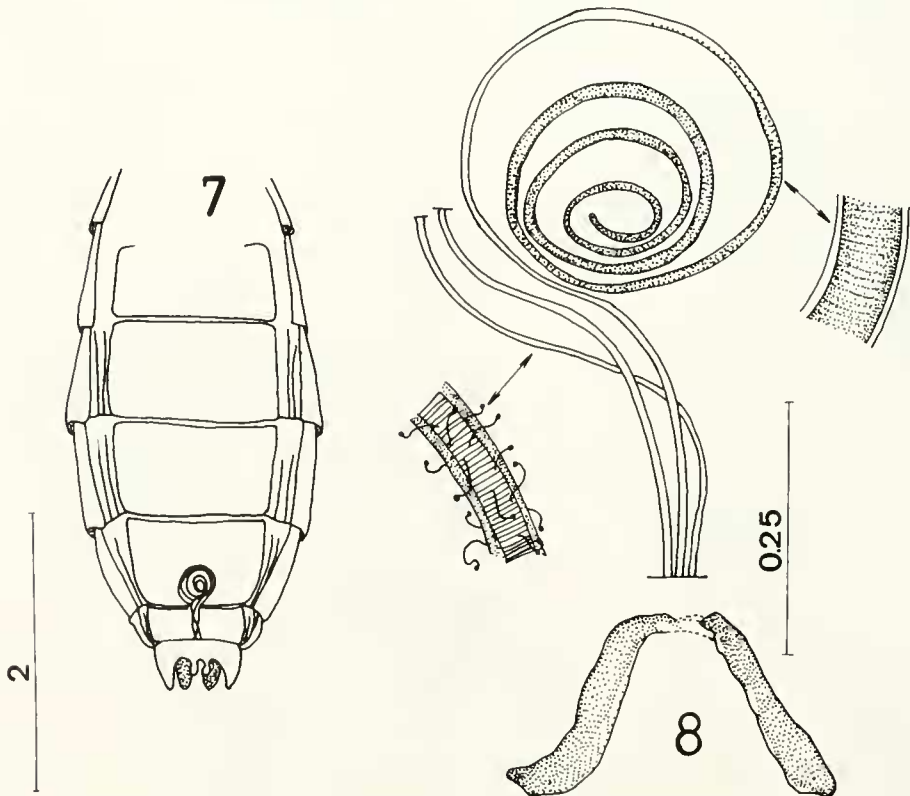
FIGURAS 1-2. *Diotria atricapilla* Meigen. 1. situation of the spermathecae in the abdomen. 2. spermathecae. Scale in mm.



FIGURAS 3-4. *Dicolonus simplex* Loew. 3, situation of the spermathecae in the abdomen. 4, spermathecae. Scales in mm.



FIGURAS 5-6. *Echthodopa pubera* Loew. 5, situation of the spermathecae in the abdomen. 6, spermathecae. Scales in mm.



FIGURAS 7-8. *Eudioctria media* Banks. 7, situation of the spermathecae in the abdomen. 8, spermathecae. Scales in mm.